

INFOGRAPHIC

15min Drive

FOR LEASE OR SALE: 7027 W US Hwy 290

7027 W US Hwy 290 Austin, TX 78749

MARKET GROWTH

2021 Total Housing Units 2026 Total Housing Units

180,678



199,766

POPULATION DETAIL



129,968

2021 Millennial
Population
(1981-1998)



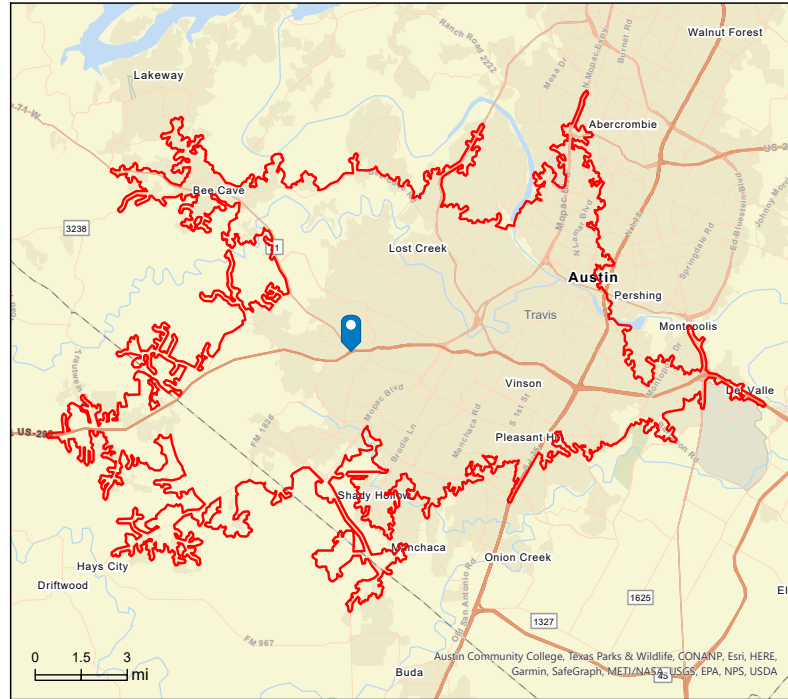
465,278

2021 Total Daytime
Population



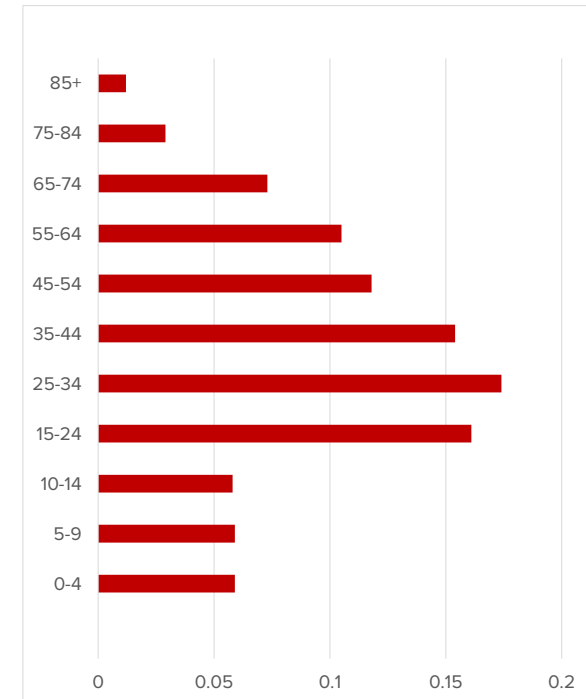
70,532

2021 Baby Boomer
Population
(1946-1964)



[CLICK HERE FOR FULL REPORT](#)

2021 POPULATION BY AGE



INCOME



\$89,601

2021 Average
Household Income



\$52,672

2021
Per Capita Income



\$432,759

2021
Median Home Value



76,848

VPD
Hwy 290 & 71

EDUCATION



12.5%

High School
Graduate



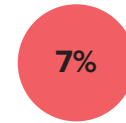
15.1%

Some College



65.4%

Bachelor's and
Higher



No Diploma/GED

Source: This infographic contains data provided by U.S. Census Bureau, Esri.



The material contained in this memorandum is based in part on information furnished to Kudu Realty Partners by sources deemed reliable. The information is believed to be accurate in all material respects, but no representations or warranty, expressed or implied, is made by any party. Nothing contained herein should be relied upon as a promise or representation as to the future. Recipients should conduct their own investigation and analysis.

(512) 595-1864

www.kudurealty.com

14205 N. Mopac Expy, Suite 450

Austin, TX 78728