



✉ Kris Manthos Ron Evans
kmanthos@kudurealty.com revans@huffmanbuilders.com
Agent License: TX 760593 Broker License: TX 409993

📍 14205 N. Mopac Expy, Suite 450
Austin, TX 78728

• COMMERCIAL REAL ESTATE DEVELOPMENT •

CALL 512.595.1864

Medical/Professional Office Building



FOR LEASE

Parmer Metric Office Building

Austin, TX

This brand new medical/professional office building is fully constructed and ready for build out. It is conveniently located on Metric Blvd, just 100 yards north of Parmer Lane, and between I-35 and Mopac. And, it is only five minutes from the St. Davis North Austin Medical Center. This is unique and convenient location for medical clinics and professional office users.

Each floor consists of approximately 11,000 sf of space for a total of 22,000 sf. Leasable in suites as small as approximately 1,500 square feet. The building design is modern and sleek. The immediate area is rich with amenities such as restaurants, pharmacies, banks, and hotels. Ease of ingress and egress with access to major Austin area thoroughfares adds to this property's attractiveness. Contact us about this opportunity while it lasts!



✉ Kris Manthos Ron Evans
kmanthos@kudurealty.com revans@huffmanbuilders.com
Agent License: TX 760593 Broker License: TX 409993

📍 14205 N. Mopac Expy, Suite 450
Austin, TX 78728

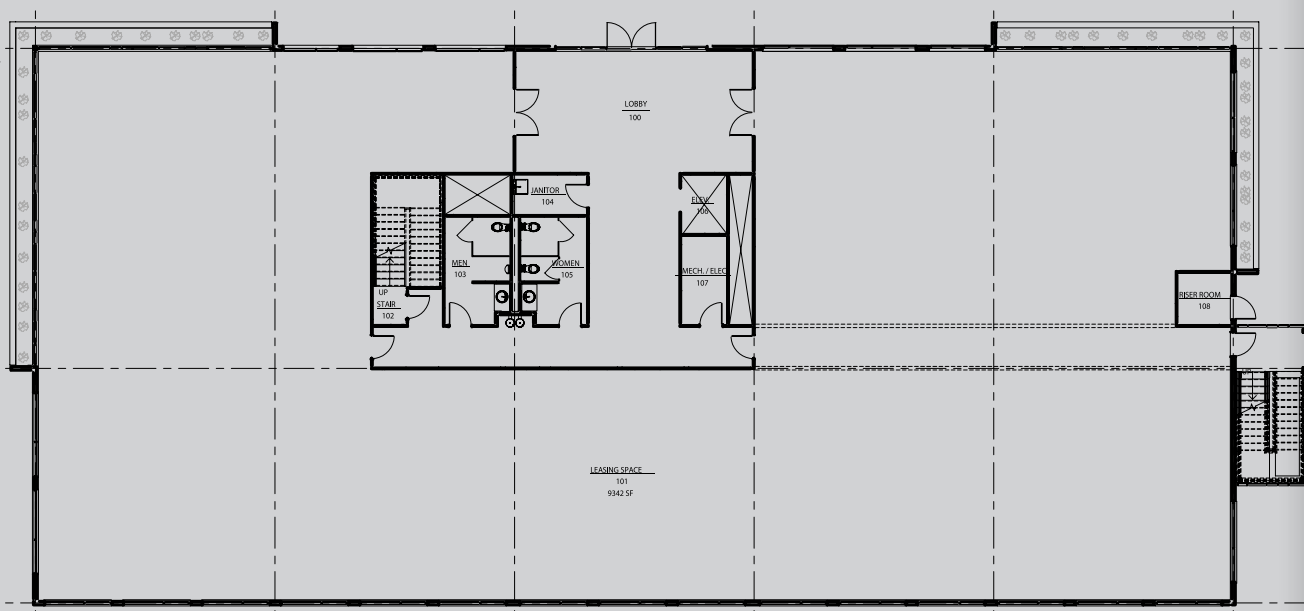
• COMMERCIAL REAL ESTATE DEVELOPMENT •

CALL 512.595.1864

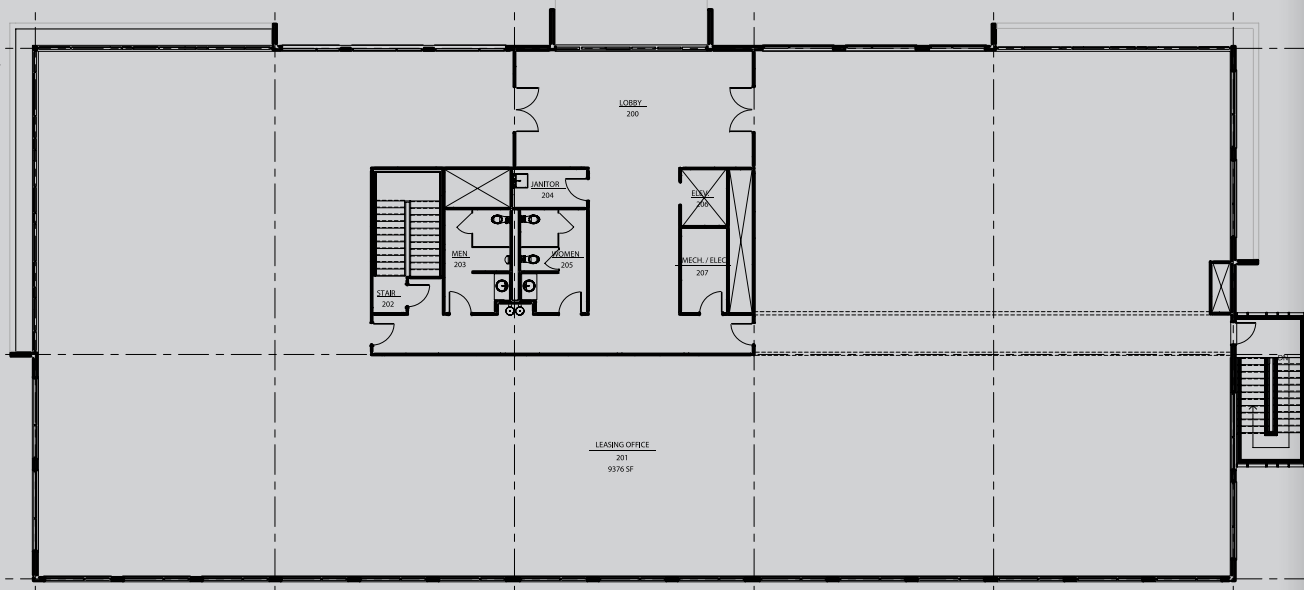
INTERIOR FLOORPLAN

Medical/Professional Office Building

First Floor



Second Floor





✉ Kris Manthos Ron Evans
kmanthos@kudurealty.com revans@huffmanbuilders.com
Agent License: TX 760593 Broker License: TX 409993

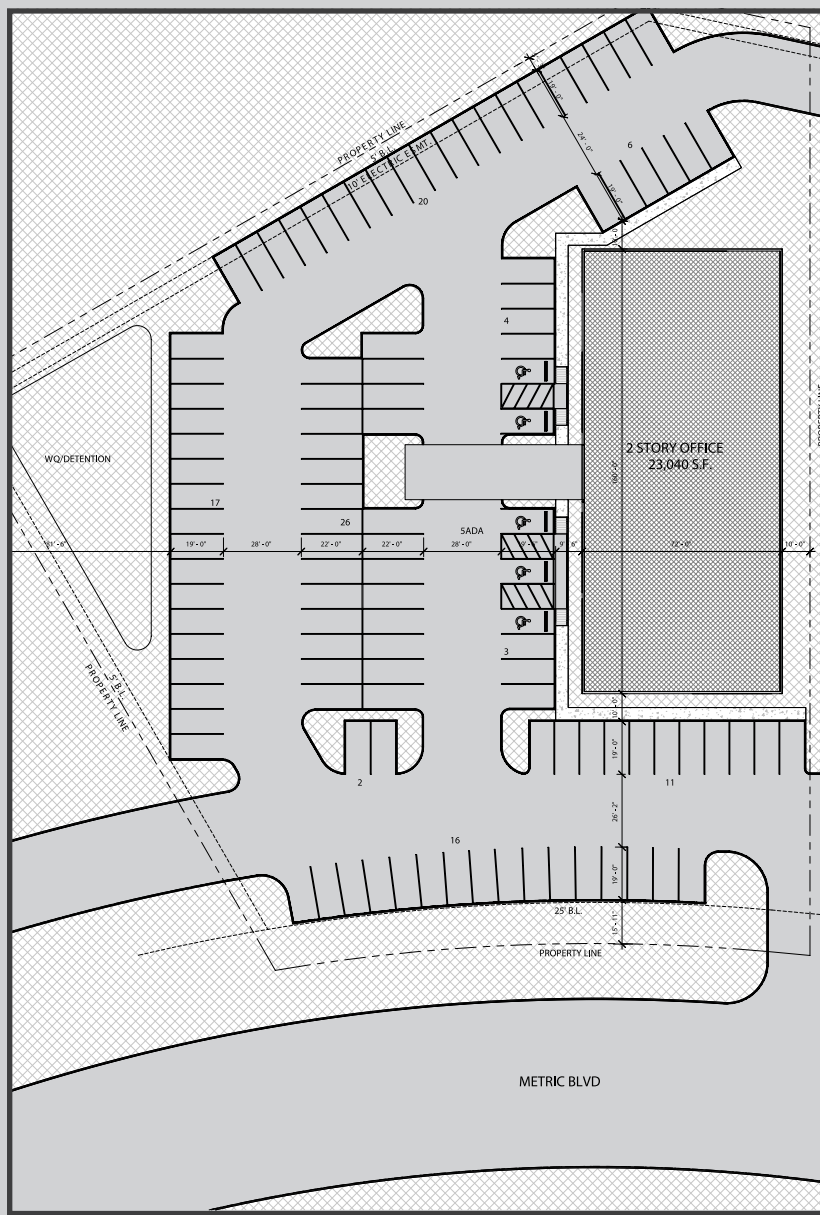
📍 14205 N. Mopac Expy, Suite 450
Austin, TX 78728

• COMMERCIAL REAL ESTATE DEVELOPMENT •

CALL 512.595.1864

SITE PLAN

Medical/Professional Office Building





✉ Kris Manthos Ron Evans
kmanthos@kudurealty.com revans@huffmanbuilders.com
Agent License: TX 760593 Broker License: TX 409993

📍 14205 N. Mopac Expy, Suite 450
Austin, TX 78728

• COMMERCIAL REAL ESTATE DEVELOPMENT •

CALL 512.595.1864

SITE PROXIMITY

Medical/Professional Office Building

